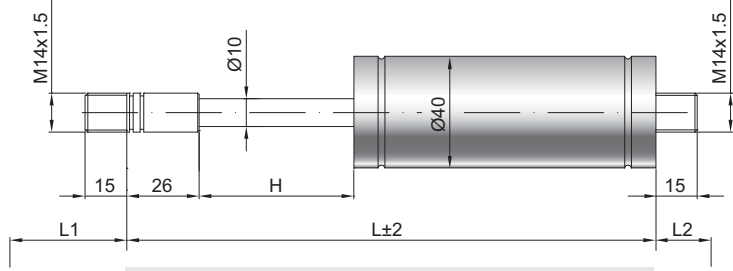


Gaszugfeder Z 10-40 V4

Zugkraft F1	200 - 2000 Newton
Progression	40 %
Kolbenstange	Ø 10 mm, W. 1.4404 / AISI 316 L, hartverchromt
Druckrohr	Ø 40 mm, W. 14571 / AISI 316 Ti
Anschlüsse	W. 1.4404 / AISI 316 L

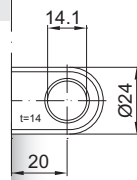
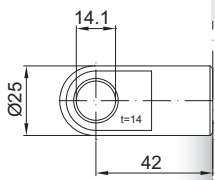
GZ 15

GZ 15



AU 42

AZ 20



Details

Standardhöhe H (mm)
 40, 50, 70, 90, 110, 140, 170, 190,
 240, 290, 340, 390, 490

Standardlänge GL
 $L = 2 \times H + 150$
 $GL = L + L1 + L2$

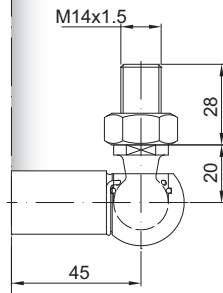
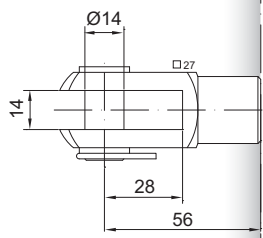
Standardlieferumfang
 Ventil an der Kolbenstange

Extras
 4 - Fettkammer
 6 - Schutzrohr
 B3 - Dichtsystem
 NT - Niedertemperaturlösung
 HT - Hochtemperaturlösung

Nur am Zylinder möglich

GG 56

WG 45



AG 57

