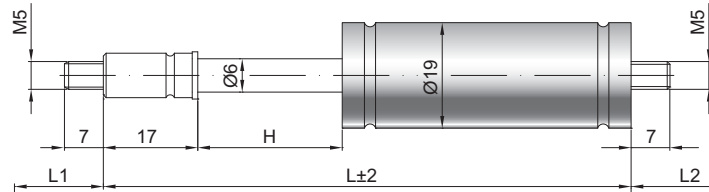


Tension spring Z 06-19

Tension force F1 30 - 330 Newton
Progression 10 %
Piston rod Ø 6 mm, steel chromium plated
Cylinder Ø 19 mm, steel black spray coated
Threads Steel zinc plated

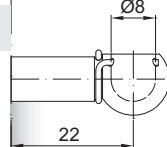
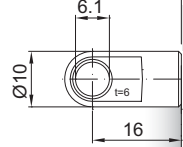
GZ 7

GZ 7



AU 16

PF 22



Details

Standard strokes H (mm)
 30, 50, 60, 70, 80, 100, 120, 140,
 150, 180, 200, 250, 300

Standard length GL
 $L = 2 \times H + 100$
 $GL = L + L1 + L2$

Standard including
 Valve on piston rod end

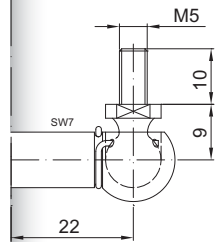
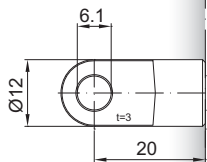
Extras
 4 - Grease chamber
 6 - Protection tube
 B3 - Sealing system
 NT - Low-temperature design
 HT - High-temperature design

Gewindezapfen auch mit M8 lieferbar

More **threads** can be found here [▶](#)

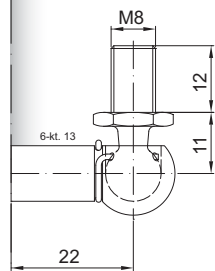
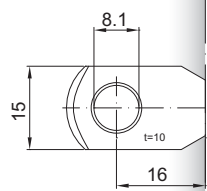
Matching **brackets** can be found here [▶](#)

AS 20



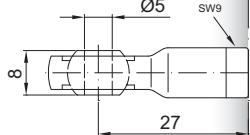
WG 22

AR 16



WX 22

AG 27



GA 20

