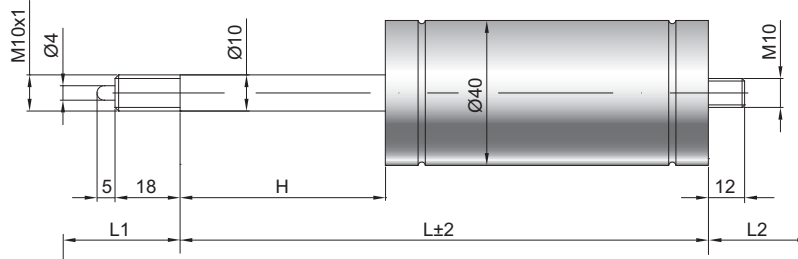


Federnd blockierbare Gasdruckfeder F 10-40

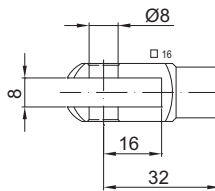
Ausschubkraft F1	100 - 1200 Newton
Progression	8 %
Kolbenstange	Ø 10 mm, Stahl hartverchromt
Druckrohr	Ø 40 mm, Stahl schwarz lackiert
Anschlüsse	Stahl blau verzinkt

GZ 18



GZ 12

GX 32



Details

Standardhöhe H (mm)

10, 15, 20, 25, 30, 40, 50, 55, 60, 70, 80, 90, 100, 110, 120, 125, 130, 140, 150, 155, 170, 190, 200, 210, 220, 230, 240, 290, 340, 390, 440, 490

Standardlänge GL

$$L = 2 \times H + 90$$

$$GL = L + L1 + L2$$

Auslösung Standard

Auslösestift 5 mm überstehend
Auslöseweg 2 - 4 mm

Technische Vorschrift beachten ▢

Standardlieferumfang

Ventil am Bodenstück

Extras

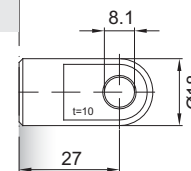
- 3 - Kolbenstangenabdichtung
- 4 - Fettkammer
- 6 - Schutzrohr

Weitere **Anschlüsse** finden Sie hier ▢

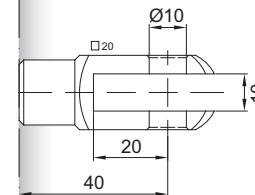
Passende **Beschläge** finden Sie hier ▢



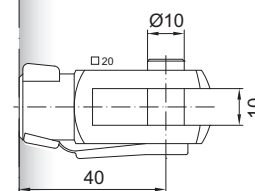
Auslösesysteme
finden Sie hier ▢



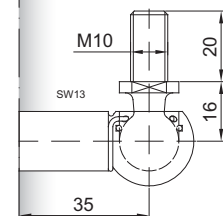
AU 27



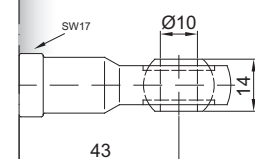
GA 40



GG 40



WG 35



AG 43