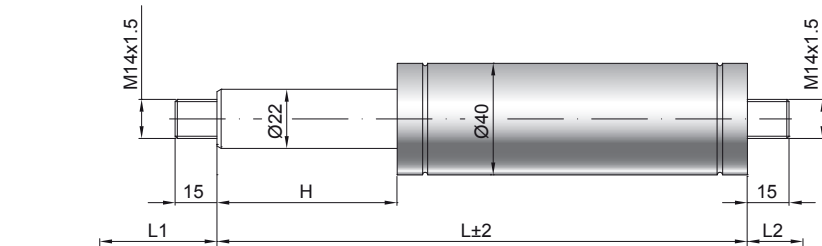


Gas spring G22-40

Extension force F1	500 - 6000 Newton
Progression	43 %
Piston rod	Ø 22 mm, steel, hard chrome plated
Cylinder	Ø 40 mm, steel, black spray coated
Threads	Steel zinc plated

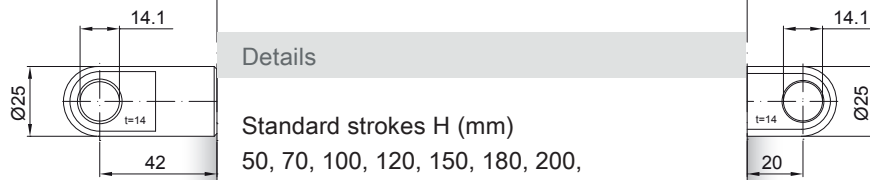
GZ 15

GZ 15



AU 42

AZ 20



only possible on cylinder end

Details

Standard strokes H (mm)
 50, 70, 100, 120, 150, 180, 200,
 220, 250, 300, 350, 400, 500, 600,
 700, 800, 900, 1000

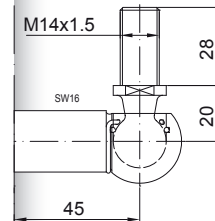
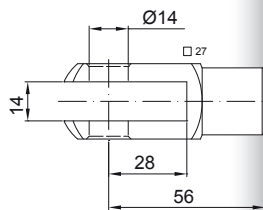
Standard length GL
 $L = 2 \times H + 138$
 $GL = L + L1 + L2$

Standard including
 Valve in base plate

- Extras
- 1 - Wiper ring
 - 2 - Radial valve
 - 4 - Grease chamber
 - 6 - Protection tube
 - 7 - Floating piston

GA 56

WG 45



AG 57

QVGZ

