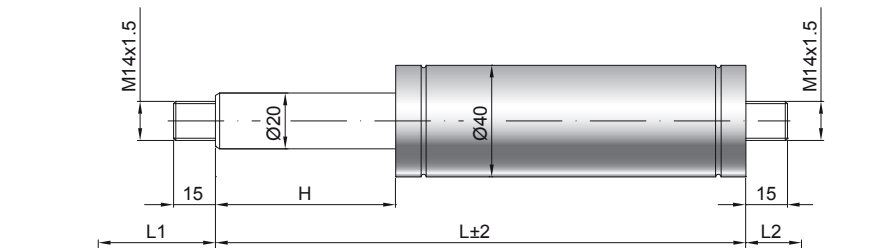


# Gas spring G20-40

Extension force F1	300 - 5000 Newton
Progression	40 %
Piston rod	Ø 20 mm, steel, hard chrome plated
Cylinder	Ø 40 mm, steel, black spray coated
Threads	Steel zinc plated

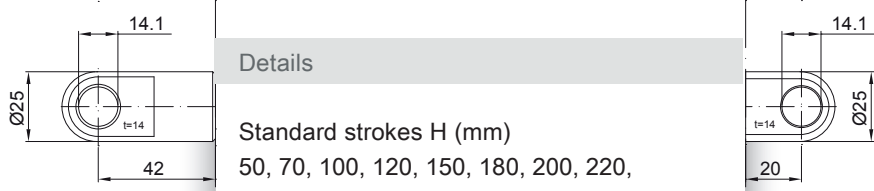
GZ 15

GZ 15



AU 42

AZ 20



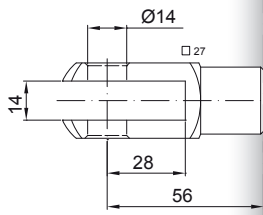
**Details**

Standard strokes H (mm)  
 50, 70, 100, 120, 150, 180, 200, 220,  
 250, 300, 350, 400, 500, 600

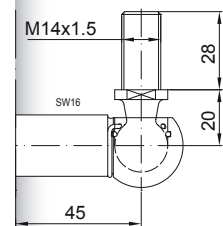
only possible on cylinder end

GA 56

WG 45

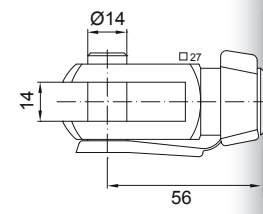


Standard including  
 Valve in base plate



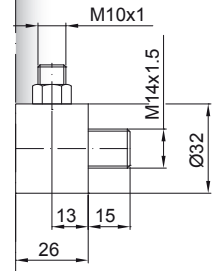
GG 56

QVGZ



**Extras**

- 1 - Wiper ring
- 2 - Radial valve
- 4 - Grease chamber
- 6 - Protection tube
- 7 - Floating piston
- B3 - Sealing system
- NT - Low-temperature design
- HT - High-temperature design



AG 57

