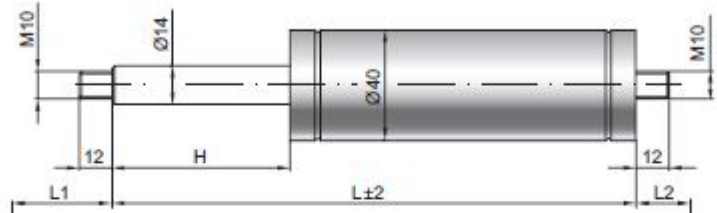


Gas spring G 14-40

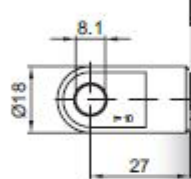
Extension force F1	150 - 2500 Newton
Progression	16 %
Piston rod	Ø 14 mm, steel, hard chrome plated
Cylinder	Ø 40 mm, steel, black spray coated
Threads	Steel zinc plated

GZ 12



GZ 12

AU 27



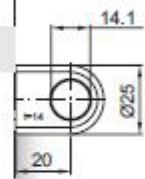
Details

Standard strokes H (mm)
 50, 60, 80, 100, 120, 150, 160, 180,
 200, 210, 220, 250, 300, 350, 400, 450,
 500, 550, 600, 650, 700

Standard length GL
 $L = 2 \times H + 100$
 $GL = L + L1 + L2$

- Extras**
- 1 - Wiper ring
 - 2 - Radial valve
 - 4 - Grease chamber
 - 5 - Valve
 - 6 - Protection tube
 - 7 - Floating piston
 - 8 - Locking device

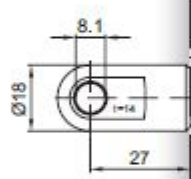
More **threads** can be found here [▶](#)



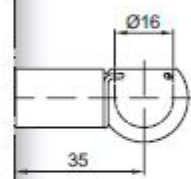
AZ 20

only possible on cylinder end

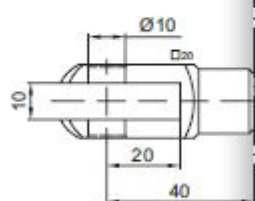
AS 27



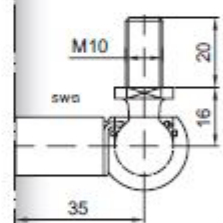
PF 35



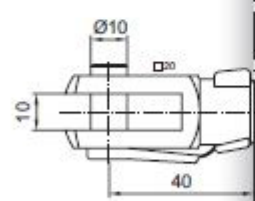
GA 40



WG 35



GG 40



QV GZ



AG 43

