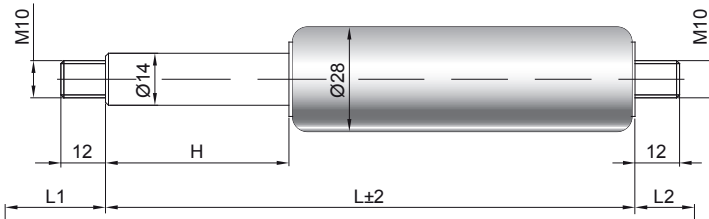


Gas spring G14-28

Extension force F1	150 - 2500 Newton
Progression	40 %
Piston rod	Ø 14 mm, steel, hard chrome plated
Cylinder	Ø 28 mm, steel, black spray coated
Threads	Steel zinc plated

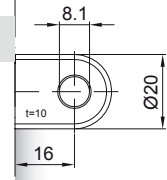
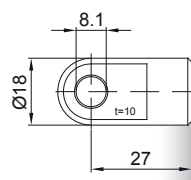
GZ 12

GZ 12



AU 27

AB 16



Details

Standard strokes H (mm)
 50, 60, 80, 100, 120, 150, 160, 180,
 200, 210, 220, 250, 300, 350, 400, 450,
 500, 550, 600, 650, 700

Standard length GL
 $L = 2 \times H + 107$
 $GL = L + L1 + L2$

Extras

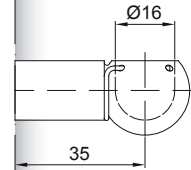
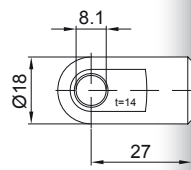
- 1 - Wiper ring
- 2 - Radial valve
- 4 - Grease chamber
- 5 - Valve
- 6 - Protection tube
- 7 - Floating piston
- 8 - Locking device
- B3 - Sealing system
- NT - Low-temperature design
- HT - High-temperature design
- RK - Friction element

More threads can be found here 

only possible on cylinder end

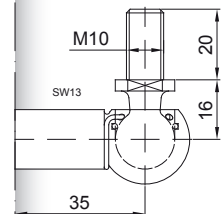
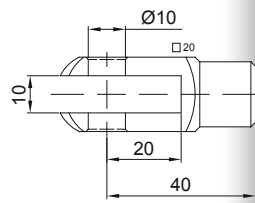
AS 27

PF 35



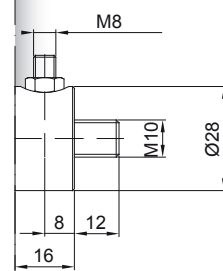
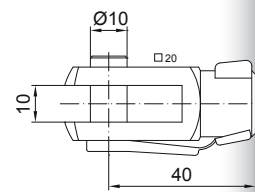
GA 40

WG 35



GG 40

QV GZ



AG 43

