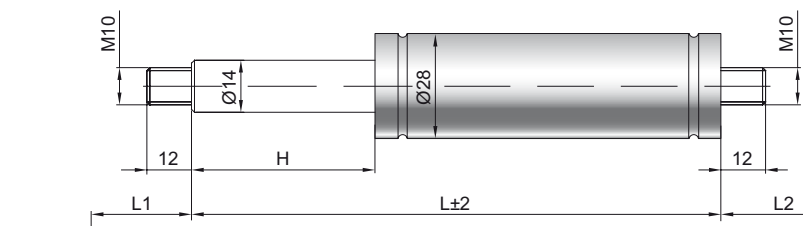


Gas spring G 14-28 V2

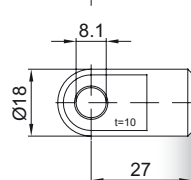
Extension force F1 200 - 2500 Newton
Progression 40 %
Piston rod Ø 14 mm, W. 1.4305 / AISI 303
Cylinder Ø 28 mm, W. 1.4301 / AISI 304
Threads W. 1.4305 / AISI 303

GZ 12

GZ 12



AU 27




Details

Standard strokes H (mm)
 50, 100, 120, 150, 180, 200, 250, 270,
 285, 300, 350, 400, 500

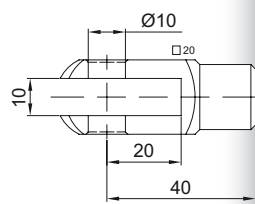
Standard length GL
 $L = 2 \times H + 107$
 $GL = L + L1 + L2$

Standard including
 Valve in base plate

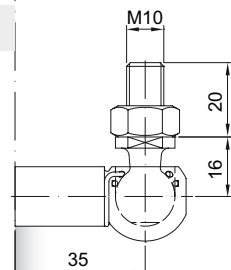
- Extras**
- 1 - Wiper ring
 - 2 - Radial valve
 - 4 - Grease chamber
 - 6 - Protection tube
 - 7 - Floating piston
 - 8 - Locking device
 - B3 - Sealing system
 - NT - Low-temperature design
 - HT - High-temperature design
 - RK - Friction element

More **threads** can be found here 

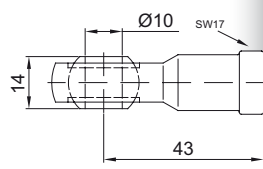
GA 40



WG 35



AG 43



QV GZ

