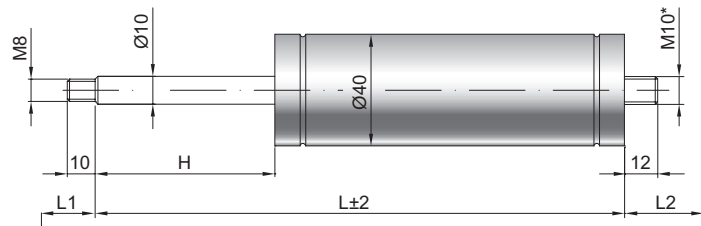


Gas spring G 10-40 V2

Extension force F1	150 - 1200 Newton
Progression	8 %
Piston rod	Ø 10 mm, W. 1.4305 / AISI 303
Cylinder	Ø 40 mm, W. 1.4301 / AISI 304
Endfittings	W. 1.4305 / AISI 303

GZ 12

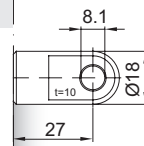
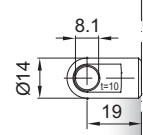
GZ 12



Details

AU 19

AU 27

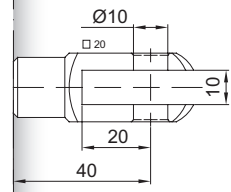
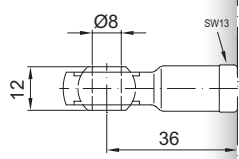


Standard strokes H (mm)
40, 70, 90, 110, 130, 140, 150, 170, 190, 210, 240, 290, 340, 390

Standard length GL
 $L = 2 \times H + 100$
 $GL = L + L1 + L2$

AG 36

GA 40

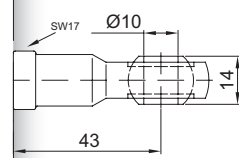
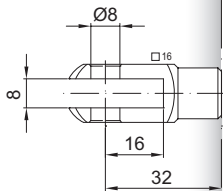


Standard including
Valve in base plate

Extras
2 - Radial valve
6 - Protection tube
7 - Floating piston

GA 32

AG 43

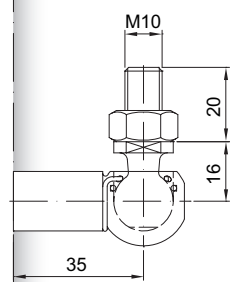
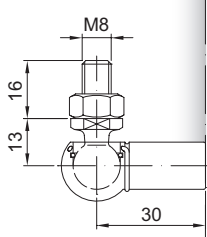


*Threaded end optional
M8, M10 or M14x1,5

More **endfittings** can be found here ▶
Matching brackets can be found here ▶

WG 30

WG 35



QV GZ

