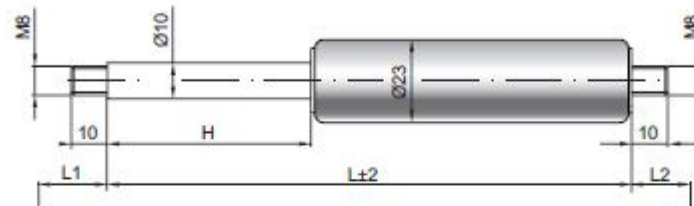


# Gas spring G 10-23

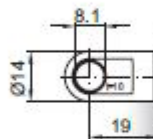
<b>Extension force F1</b>	100 - 1200 Newton
<b>Progression</b>	30 %
<b>Piston rod</b>	Ø 10 mm, steel, hard chrome plated
<b>Cylinder</b>	Ø 23 mm, steel, black spray coated
<b>Threads</b>	Steel zinc plated

GZ 10



GZ 10

AU 19



### Details

#### Standard strokes H (mm)

40, 50, 60, 80, 85, 100, 120, 140, 150, 160, 180, 200, 220, 250, 270, 300, 325, 350, 400, 450, 500, 600, 700

#### Standard length GL

$L = 2 \times H + 70$   
 $GL = L + L1 + L2$

#### Extras

- 1 - Wiper ring
- 2 - Radial valve
- 4 - Grease chamber
- 5 - Valve
- 6 - Protection tube
- 7 - Floating piston
- 8 - Locking device
- B3 - Sealing system
- NT - Low-temperature design
- HT - High-temperature design
- RK - Friction element

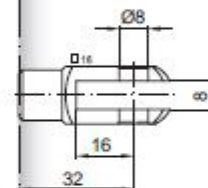
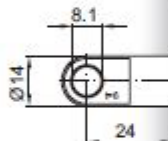
More **threads** can be found here [▶](#)

**Matching brackets** can be found here [▶](#)

AB 11

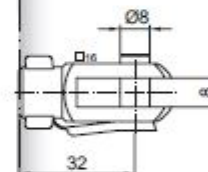
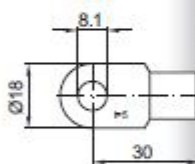
*only possible on cylinder end*

AS 24



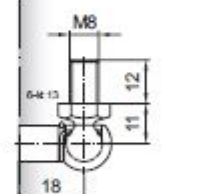
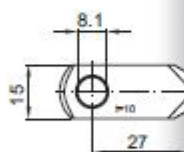
GA 32

AS 30



GG 32

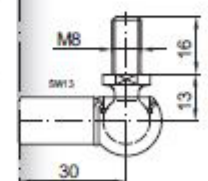
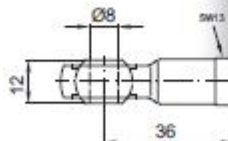
AR 27



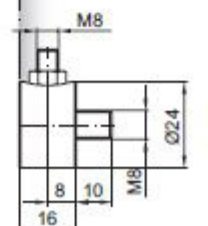
WG 18

*until max. 800 N*

AG 36



WG 30



QV GZ