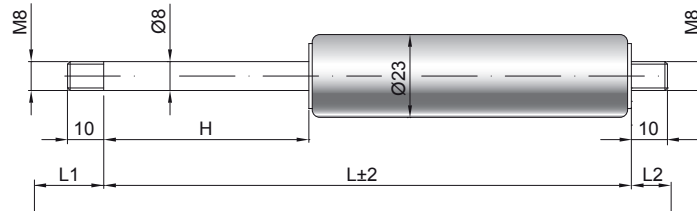


Gas spring G08-23

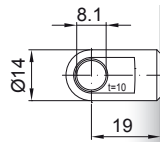
Extension force F1	50 - 700 Newton
Progression	18 %
Piston rod	Ø 8 mm, steel, hard chrome plated
Cylinder	Ø 23 mm, steel, black spray coated
Threads	Steel zinc plated

GZ 10



GZ 10

AU 19



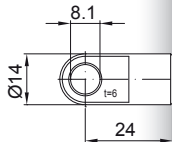
Details

Standard strokes H (mm)
40, 50, 60, 70, 80, 100, 110, 120,
140, 150, 160, 180, 200, 220, 250,
300, 350, 400, 500

AB 11

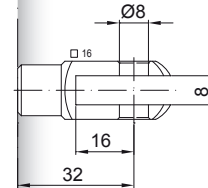
only possible on cylinder end

AS 24

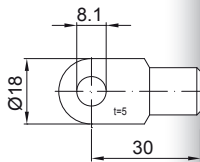


Standard length GL
 $L = 2 \times H + 70$
 $GL = L + L1 + L2$

GA 32

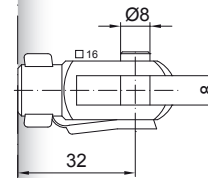


AS 30

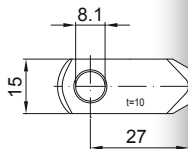


Extras
1 - Wiper ring
2 - Radial valve
4 - Grease chamber
5 - Valve
6 - Protection tube
7 - Floating piston
8 - Locking device
B3 - Sealing system
NT - Low-temperature design
HT - High-temperature design
RK - Friction element

GG 32

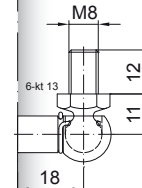


AR 27

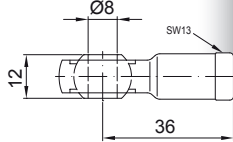


WG 18

until max. 800 N

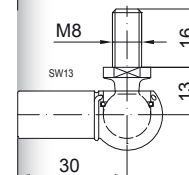


AG 36



More threads can be found here [▶](#)
Matching brackets can be found here [▶](#)

WG 30



QV GZ

