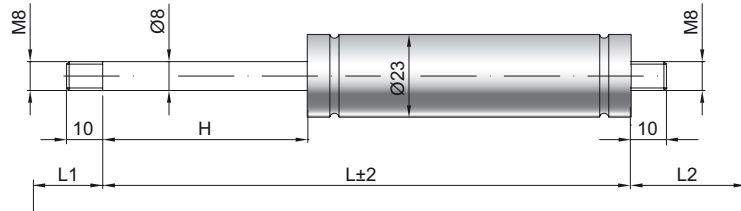


Gas spring G 08-23 V2

Extension force F1 50 - 700 Newton
Progression 18 %
Piston rod Ø 8 mm, W. 1.4305 / AISI 303
Cylinder Ø 23 mm, W. 1.4301 / AISI 304
Threads W. 1.4305 / AISI 303

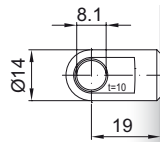
GZ 10

GZ 10



AU 19

GA 32



Details

Standard strokes H (mm)
 40, 50, 60, 80, 100, 120, 150, 160,
 180, 200, 220, 250, 300

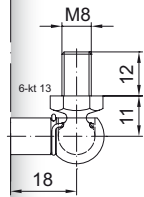
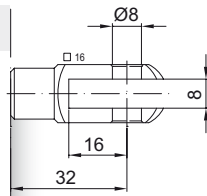
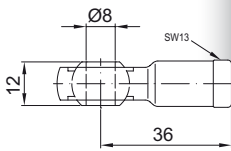
Standard length GL
 $L = 2 \times H + 70$
 $GL = L + L1 + L2$

Standard including
 Valve in base plate

- Extras**
- 2 - Radial valve
 - 6 - Protection tube
 - 7 - Floating piston
 - 8 - Locking device

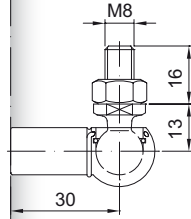
More **threads** can be found here ▶
 Matching **brackets** can be found here ▶

AG 36

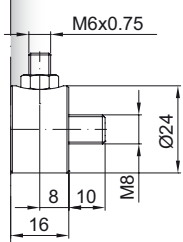


WG 18

until max. 800 N



WG 30



QV GZ