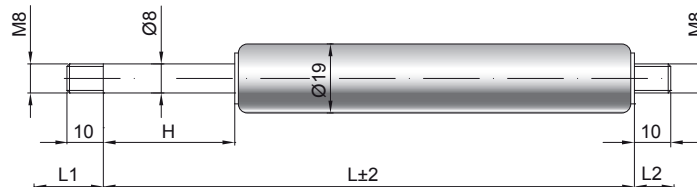


Gas spring G08-19

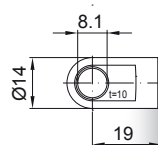
Extension force F1	50 - 700 Newton
Progression	30 %
Piston rod	Ø 8 mm, steel, hard chrome plated
Cylinder	Ø 19 mm, steel, black spray coated
Threads	Steel zinc plated

GZ 10



GZ 10

AU 19



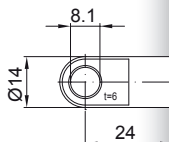
Details

Standard strokes H (mm)
40, 50, 60, 70, 80, 100, 110, 120, 140, 150,
160, 180, 200, 220, 250, 300, 350, 400, 500

AB 11

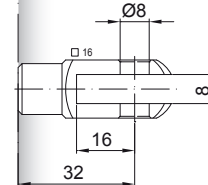
only possible on cylinder end

AS 24

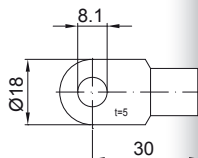


Standard length GL
 $L = 2 \times H + 70$
 $GL = L + L1 + L2$

GA 32



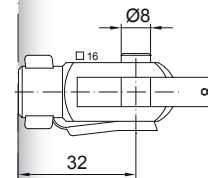
AS 30



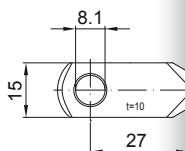
Extras

- 1 - Wiper ring
- 2 - Radial valve
- 4 - Grease chamber
- 5 - Valve
- 6 - Protection tube
- 7 - Floating piston
- 8 - Locking device
- B3 - Sealing system
- NT - Low-temperature design
- HT - High-temperature design
- RK - Friction element

GG 32

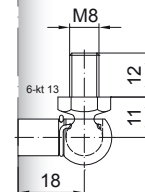


AR 27

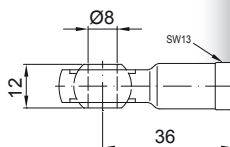


WG 18

until max. 800 N

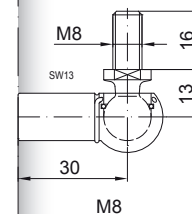


AG 36



More threads can be found here [▶](#)
Matching brackets can be found here [▶](#)

WG 30



QV GZ

