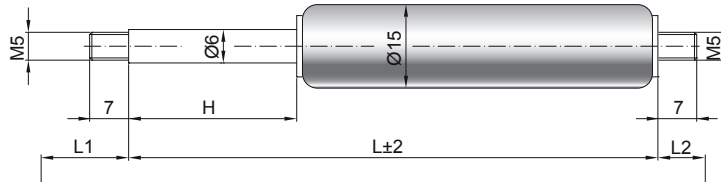


Gas spring G06-15

Extension force F1	40 - 400 Newton
Progression	22 %
Piston rod	Ø 6 mm, steel, hard chrome plated
Cylinder	Ø 15,6 mm, steel, black spray coated
Threads	Steel zinc plated

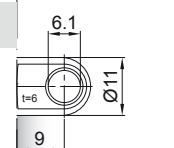
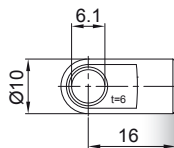
GZ 07

GZ 07



AU 16

AB 09



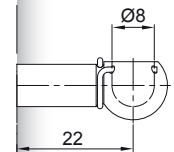
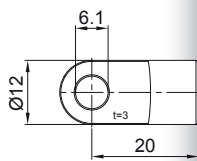
Details

Standard strokes H (mm)
 20, 30, 40, 50, 60, 70, 80, 100, 110,
 120, 140, 150, 160, 170, 180, 190, 200,
 220, 250, 300

only possible on cylinder end

AS 20

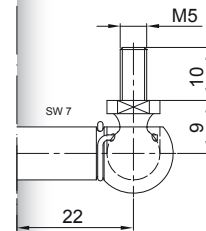
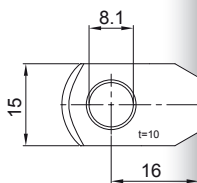
PF 22



Standard length GL
 $L = 2 \times H + 55$
 $GL = L + L1 + L2$

AR 16

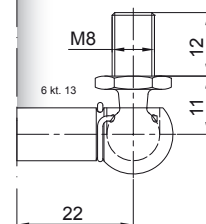
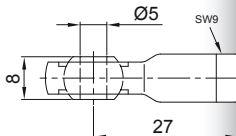
WG 22



Extras
 4 - Grease chamber
 5 - Valve
 6 - Protection tube
 7 - Floating piston
 B3 - Sealing system
 NT - Low-temperature design
 HT - High-temperature design
 RK - Friction element

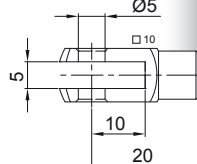
AG 27

WX 22



More threads can be found here [▶](#)
 Matching brackets can be found here [▶](#)

GA 20



WX 22