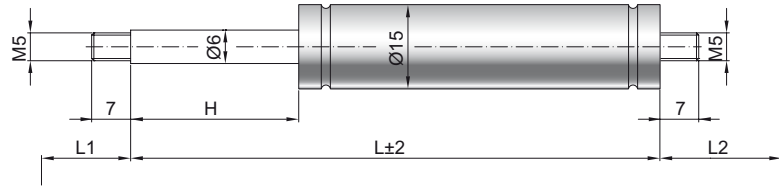


Gas spring G 06-15 V4

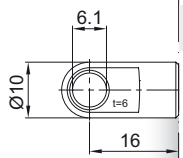
Extension force F1	40 - 400 Newton
Progression	25 %
Piston rod	Ø 6 mm, W. 1.4404 / AISI 316 L
Cylinder	Ø 15,6 mm, W. 1.4571 / AISI 316 Ti
Threads	W. 1.4404 / AISI 316 L

GZ 07

GZ 07



AU 16



Details

Standard strokes H (mm)
40, 50, 60, 80, 90, 100, 120, 150, 200

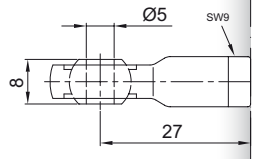
Standard length GL
 $L = 2 \times H + 55$
 $GL = L + L1 + L2$

Standard including
Valve in base plate, Wiper ring, Grease chamber

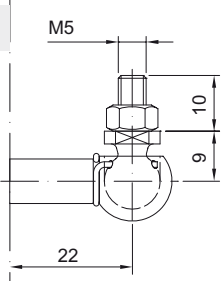
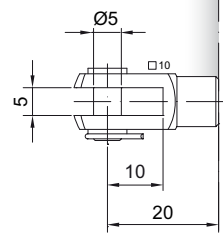
Extras
6 - Protection tube
7 - Floating piston
B3 - Sealing system
NT - Low-temperature design
HT - High-temperature design
RK - Friction element

More **threads** can be found here [▶](#)
Matching **brackets** can be found here [▶](#)

AG 27



GG 20



WG 22