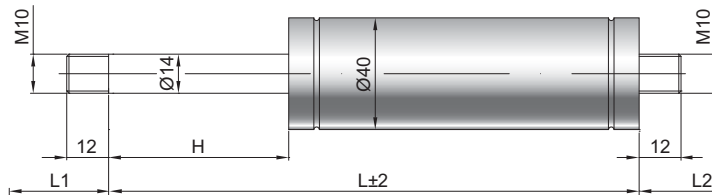


# Ölbremse D 14-40 V2

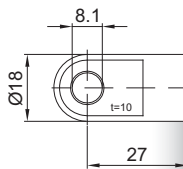
**Dämpfungskraft** 400 - 2500 Newton  
**Kolbenstange** Ø 14 mm, W. 1.4305 / AISI 303  
**Druckrohr** Ø 40 mm, W. 1.4301 / AISI 304  
**Anschlüsse** W. 1.4305 / AISI 303

GZ 12

GZ 12



AU 27



### Details

**Standardhöhe H (mm)**  
 50, 100, 120, 150, 200, 250, 270,  
 300, 350, 400, 500, 600, 700

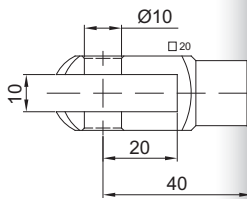
**Standardlänge GL**  
 $L = 2 \times H + 60$   
 $GL = L + L1 + L2$

**Extras**  
 6 - Schutzrohr

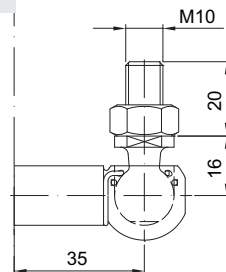
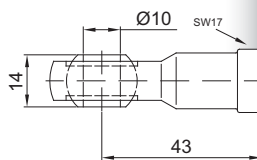
**Dämpfung**  
 1 = Zugdämpfer  
 2 = Druckdämpfer  
 3 = beidseitig wirkender Dämpfer

Weitere **Anschlüsse** finden Sie hier [▶](#)

GA 40



AG 43



WG 35